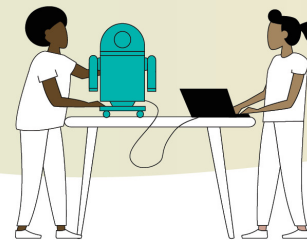
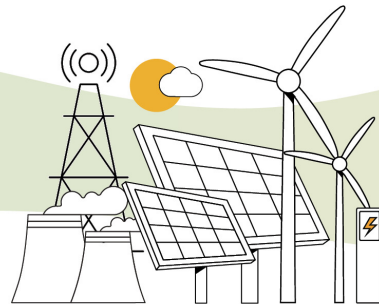
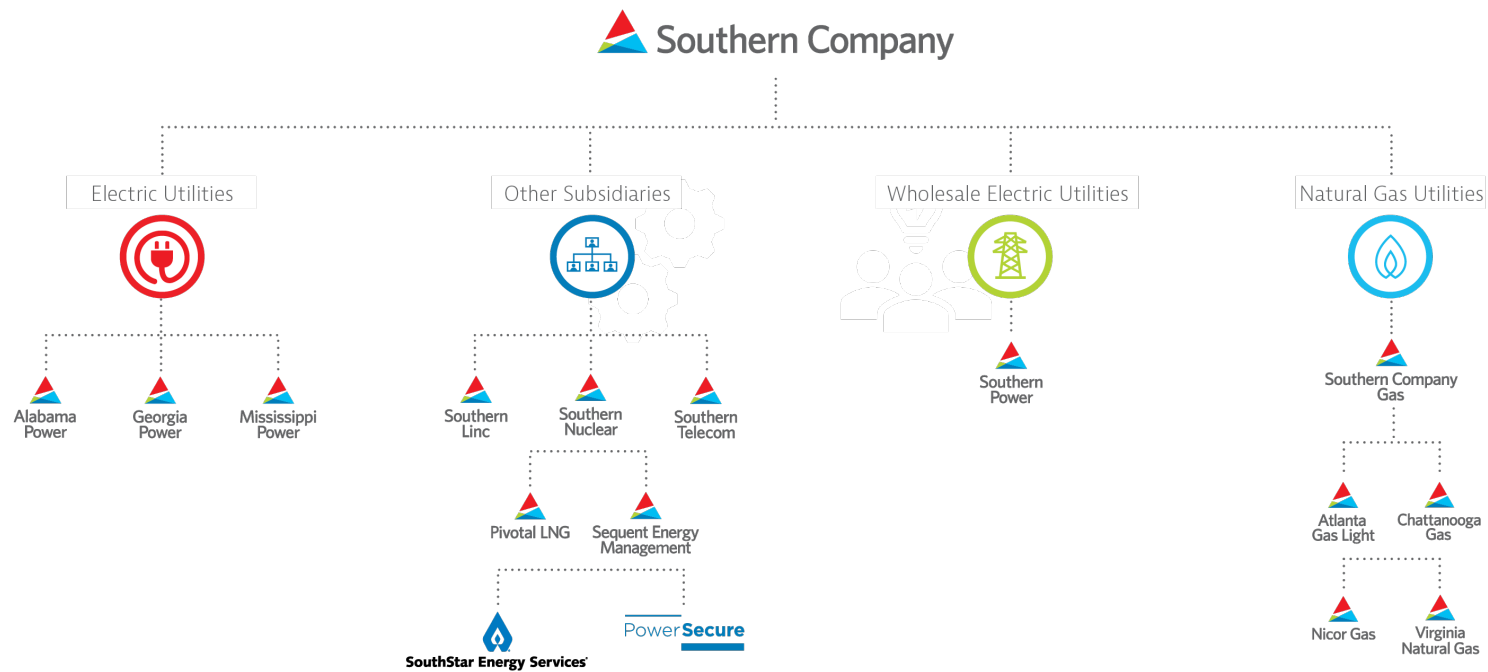


Georgia Power Renewables Overview

September 30, 2024 – NASEO Annual Meeting



Our Family of Companies

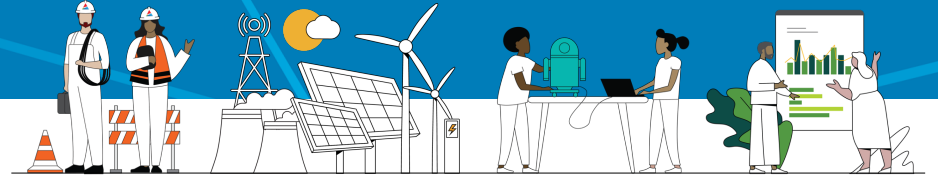


We support U.S. customers and businesses nationwide


- Customized energy solutions
- Fiber optics and wireless communications

*Southern Company has a 50% equity interest in the Southern Natural Gas pipeline system through a subsidiary of Southern Company Gas.

Georgia Power At-A-Glance



Largest of three Southern Company electric utilities

 2.7 million customers	6,548 employees
	12k + miles of transmission lines

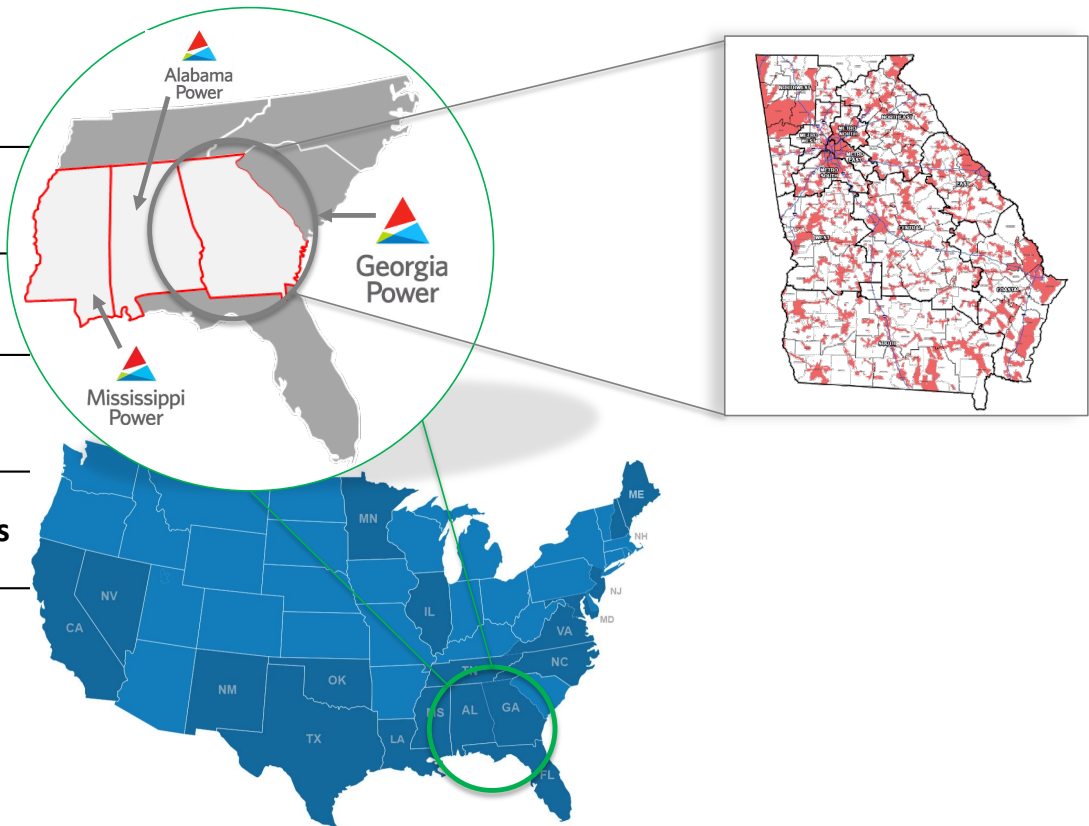


High customer satisfaction

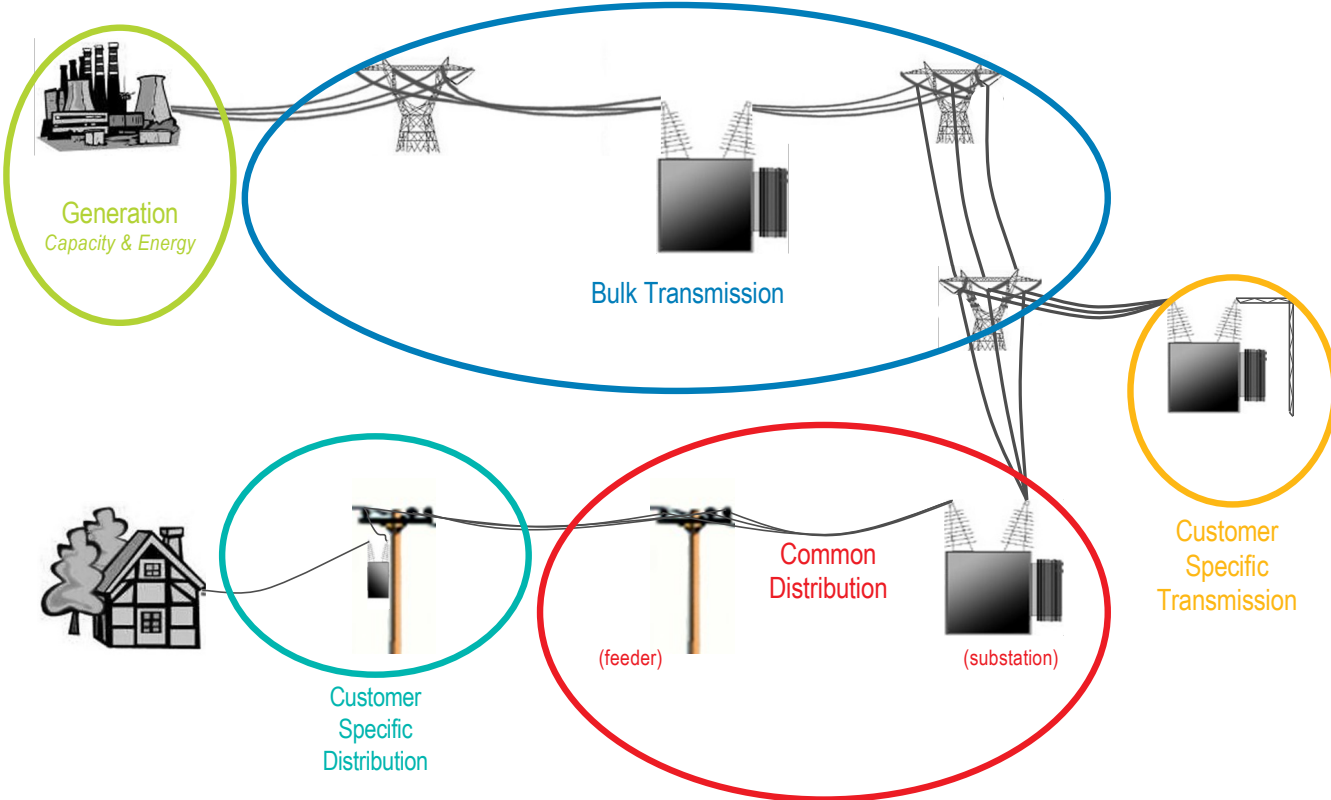
\$31M + Invested in charitable causes

90k miles of power lines

45% of customers earning under \$40k



Electric System Supply

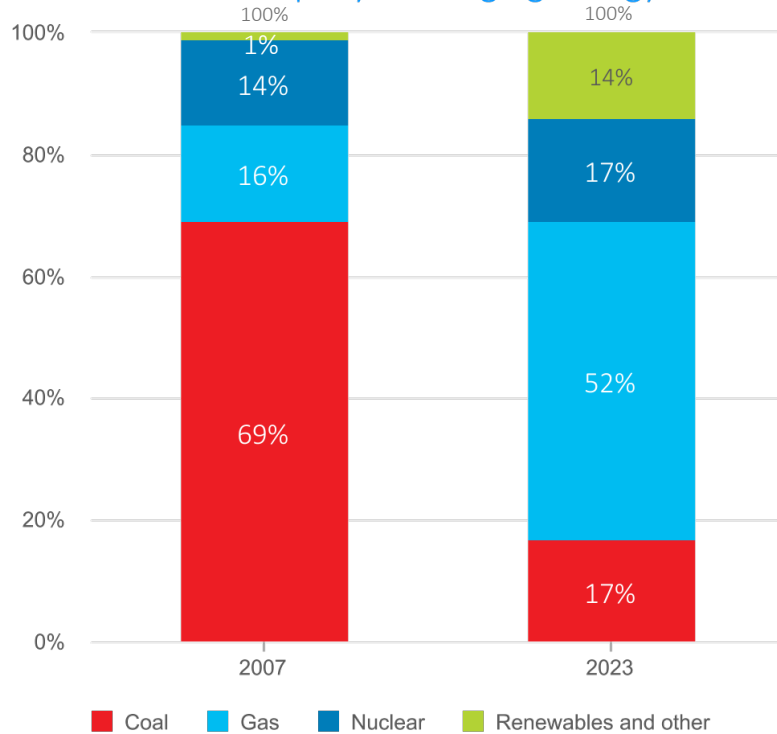


Growing Portfolio of Renewables



Southern Company's Changing Energy Mix

Percent of 100% Electricity Generation Mix



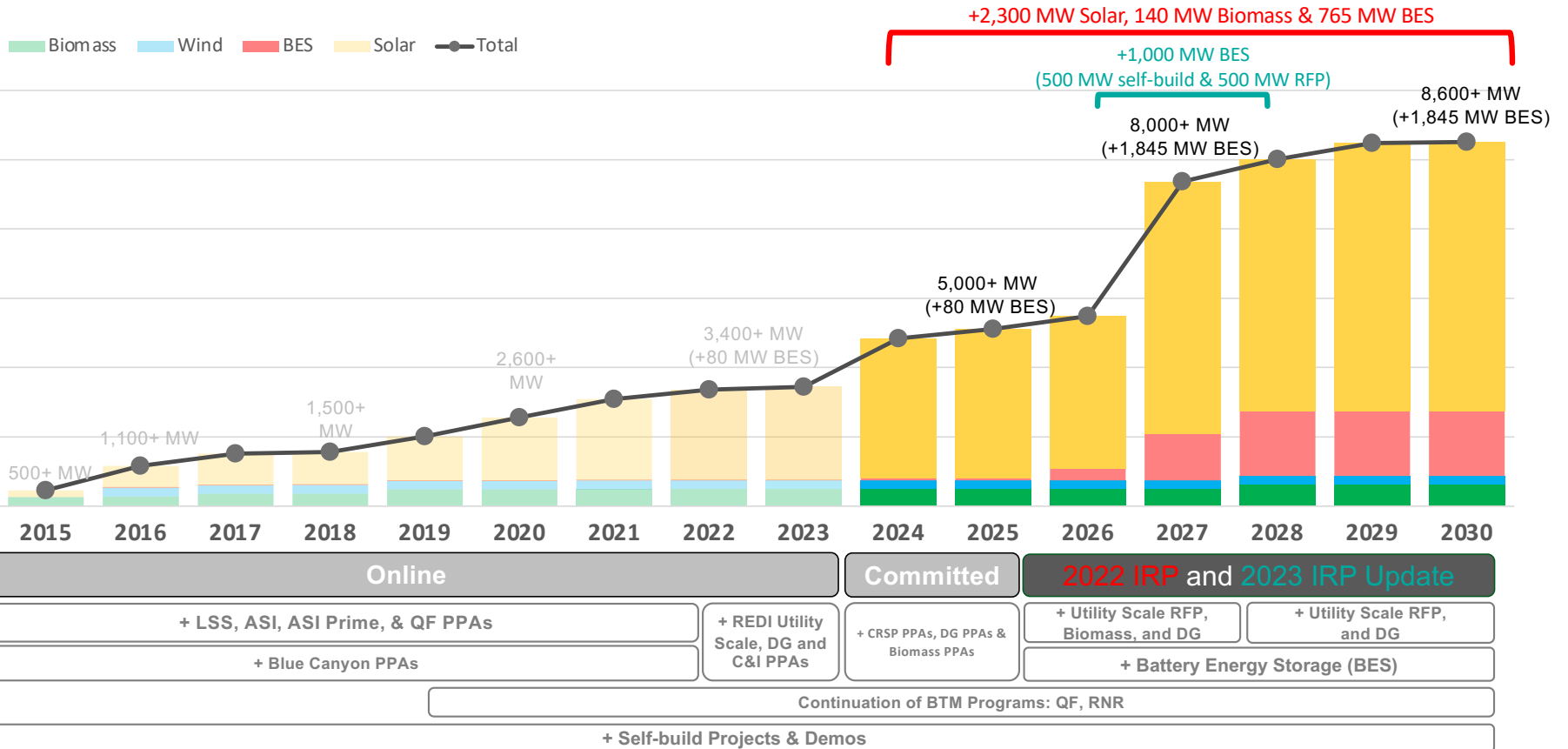
Investing in Carbon-Free Sources and Energy Efficiency

<p>~10,400 MW¹ Coal fleet retirements or conversions to gas since 2007</p>	<p>4.6 Million Smart meters installed system-wide</p>
<p>~20,000 MW Expected renewable and storage resources by 2030</p>	<p>\$1.28 Billion in energy efficiency and demand response since 2007</p>
<p>>11,600 MW Current renewable and storage resources</p>	<p>~25,000 MW Expected portfolio of clean energy sources by 2030</p>

***REC Disclaimer:** Georgia Power purchases only the null energy output from some renewable generating facilities that have contracted to sell that energy to Georgia Power. Ownership of the associated renewable energy credits ("RECs") is specified in each respective power purchase agreement. The party that owns the RECs retains the right to use them.

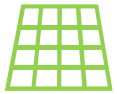
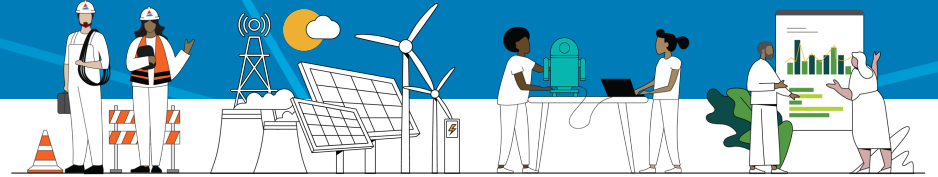
¹ Includes planned coal retirements, renewables and storage projects approved in 2023 as part of the Georgia Power Integrated Resource Plan. Data up to date as of 12/31/2023.

Renewable & Storage Capacity



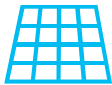
REC Disclaimer: A portion of the renewable generation capacity included in this chart includes capacity where the renewable generator or subscribing customer retains the related Renewable Energy Credits (RECs) and the right to use and report them.

Customer Program Options



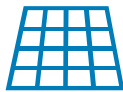
Clean and Renewable Energy Subscription (CARES) Program

- C&I subscription to 2,100 MW of additional utility scale renewable generation



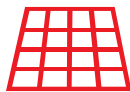
Retail REC Retirement (R3) Program

- Purchase of RECs generated from $\leq 2,000$ MW of existing renewables at a fixed cost



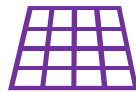
Simple Solar and Flex REC Programs

- Simple Solar customers match a portion of monthly energy usage with RECs
- *Flex REC* customers purchase 100,000 kWh+ RECs monthly at a fixed quantity and term



Community Solar Program & Income-Qualified Community Solar (IQCS) PILOT

- *Community Solar* residential and small commercial customers subscribe to local solar farms
- *IQCS PILOT* provides up to 5,000 income-qualified customers access to farms at a discount



Behind-the-Meter (BTM) Distributed Energy Resources (DER) Installation

- Georgia Power to purchase/credit customers for excess energy generated
- 250 MW of DER installed on customer's property BTM





Georgia
Power